



**WARNING: READ AND UNDERSTAND THIS MANUAL IN ITS ENTIRETY BEFORE USE**



## USER MANUAL

Updated December 16, 2016

The latest manual is available online at [www.xm42.com](http://www.xm42.com)

For video instructions, visit:

<https://www.youtube.com/watch?v=NqVynvXbe4E>

### Required:

- butane or isobutane fuel canister (see page 4)
- fuel (see page 5)

### SPECIAL THANKS TO OUR INDIEGOGO SUPPORTERS:

Aaron Overton, Adam Gentile, Adam McClarty, Adam Mishcon, Adonis Storm, Alexander Nowell, Alexander Pushkov, Alexander Schaller, Andrew Bader, Andrew Boley, Andrew Hudson, Andrew Vincent, Andy Rusk, Anthony J Rodrigues, Arthur Murphy, Barry Nelson, Bjarki Gunnarsson, Brandon Lewing, Brian Alexander, Brian Foutch, Bubba Harmon, Chad Debeaumont, Chad South, Chris Farris, Chris Gunn, Chris Hill, Christian Zabbal, Cody Mohler, Colin Evans, Constantine Fotopoulos, Craig Border, Craig Lawson, Dan Colosimo, Dan Roche, Daniel Cannon, Daniel Hershman, Darwin Pinder, David Crowder, David Koonce, David Petty, David Roberts, David Terry, David Waldron, Don White, Donald Curtis, Donald Woolridge, Edward Avila, Elijah Sweat, Erandy Ramly, Eric Becker, Eric Madden, Fleming Lyles, Florio Tiramani, Fred Von Graf, Glen Thompson, Gustav Haglund, Heath Williams, Hunter Windham, Ian O'Brien, J Neil Jednoralski, James Whitmore, Jarid Perry, Jason Jones, Jason Seleno, Jeff Piuma, Jeffrey Swain, Jeremy Hutchinson, Jerome Thielen, Joel Zaruba, Johan Chamucero, John Anderson, John Appleby, John Caprefoli, John Castillo, John Delinocci, John Giddens, Jordan Hale, Joshua Magady, Justin Beurie, Justin Reed, Keith Bolton, Ken Miyamoto, Kenneth Ellenberg, Kenneth Gabel, Kris Petter, Larry Vickers, Lathier Brown, Lou Driever, Marc Blackson, Marc Cavicchioli, Marcus Beaman, Mark Laderman, Mark Pulver, Mark Siorek, Marshall Royce, Matt Burger, Matt Montgomery, Matthew King, Matthew Laplant, Matthew Mcfarland, Matthew Swope, Max Venom Product Group, Miao Wang, Michael Lea, Michael Moyer, Michael Myhal, Michael Proscia, Michael Ransdell, Michael Sisk, Michael Wann, Mike Crow, Mike Stokke, Nate Wentworth, Nicholas Gianfortune, Nick Schexsnayder, Patrick Owen, Patrick Stewart, Paul Goggin, Peter Dillon, Peyton Lucas, Randall Gicker, Raymond E Ramirez, Rick Medina, Rob Moser, Rob Smith, Rob Wadley, Robert Anderson, Robert Balyszak, Robert Edwards, Robert Sobieski, Robin Schwarz, Ryan Ballard, Ryan Brush, Ryan Jones, Ryan Murphy, Ryan Peters, Ryan Schell, Ryan Stock, Ryan Wilsey, Samuel Miller, Scott Sharer, Scott Smith, Shane Graham, Shireen Karolia, Stefan Stone, Stephen Orcutt, Steve Lawrence, Steven Shuff, Summer Fleming, Ted Newlander, Thomas Obrey, Thomas Shumaker, Thomas Williams, Tim Mcfeaters, Timur Kadyrov, Todd Wagner, Tom Buckley, Tom Reynolds, Troy Pleinis, Tyler Sharp, Vito Rocco, William Craft, William Hockett, and William O'Brien.

If you experience any issues with your XM42, contact us at [support@xm42.com](mailto:support@xm42.com) and we'll do what we can to help!



## IMPORTANT SAFETY WARNINGS AND INSTRUCTIONS

When the XM42 is turned on and the trigger is pressed, the XM42 sends out a stream of fuel that's ignited. The stream may extend beyond 25 feet. The XM42 is intended for proper use by legally-competent persons over the age of 18. The Ion Productions Team, LLC and its members, managers, agents, and representatives shall not be liable for any damages that result from improper or unauthorized use.

### TO REDUCE RISK OF INJURY:

- Read all instructions before operating product. Failure to follow all instructions listed below may result in burns, unintentional fires and/or serious injury or death. Save these instructions and review frequently before use and when instructing others.
- KEEP OUT OF REACH OF CHILDREN
- Inspect for leaks before operation. Check all visible fittings and ensure there is no fuel leaking anywhere on or inside the device. If you suspect or notice any leakage (through sight, smell, or otherwise), discontinue use immediately and contact [support@xm42.com](mailto:support@xm42.com) for technical support.
- Never aim in any unsafe direction.
- Nozzle area becomes hot and aflame during use. DO NOT TOUCH NOZZLE AREA.
- Pilot torch becomes hot and aflame during use. DO NOT TOUCH PILOT TORCH BURNER TUBE.
- Do not handle or untwist/remove butane canister while any flame is present.
- Keep all parts of body as far away as possible from nozzle during use.
- Do not aim towards anything you do not intend to ignite.
- Do not refill fuel tank while pilot flame is ignited.
- Do not use in windy conditions. The fuel stream and droplets of fuel can travel toward the operator or other unintended areas.
- Do not drop or impact in any way. If the XM42 is dropped or dented, it may not function properly. Contact the manufacturer for repairs and do not attempt to use.
- Do not expose to or use in temperatures higher than 110F or lower than 0F.
- Fuel has the ability to drip from the nozzle of the device at any time. Always be sure the XM42 is directed safely away from people and flammable surfaces, and that all parts of the operator's body are as far away from the nozzle as possible. Never aim XM42 higher than 45 degrees: risk of fuel drip onto operator.
- When the pilot torch is lighted or the nozzle area is aflame, do not point the XM42 nozzle towards the operator's feet; fuel can drip at any time.
- Portions of the XM42 may become very hot to the touch during use. Do not touch any portion of the nozzle while the XM42 is lit or within 20 minutes after extinguishing.
- Ensure pilot torch gas valve is fully closed after use and XM42 power button is off.
- Use in upright position only.
- DO NOT DISASSEMBLE IN ANY WAY.
- **BE SMART. BE SAFE.**

### LITHIUM BATTERY WARNINGS:

- CHECK VOLTAGE BEFORE AND AFTER EVERY USE.
- DO NOT allow overall battery pack voltage to drop below 10.0 volts, nor any individual cell to drop below 3.3 volts. The battery may not re-charge or may become hazardous.
- DO NOT charge with any charger other than the one provided.
- Failure to read and follow these instructions may result in fire, personal injury and damage to property if charged or used improperly.
- Lithium polymer battery packs may explode and cause fire if misused or short circuited.
- DO NOT PUNCTURE THE BATTERY, DO NOT SHORT CIRCUIT THE BATTERY, DO NOT INCINERATE THE BATTERY. DON'T EAT IT EITHER.
- DO NOT EXPOSE TO WATER, EXCESSIVE MOISTURE, OR ANY LIQUID.
- When charging the battery, place XM42 on a fire proof surface. Do not leave unit unattended.
- If you notice any damaged or frayed wiring, discontinue use immediately, place in a safe area, and contact us.
- USE ONLY a balance charger designed for lithium polymer batteries in a 3S (3-cell) configuration such as the charger provided.
- NEVER make a wrong polarity connection when charging and discharging battery packs.
- Replace battery with a new one at least every 3 years.
- NEVER leave the XM42 where it is subjected to extremes in temperatures. This includes low levels as well as high.
- DO NOT leave unit in direct sunlight.
- There are fire risks when batteries are overcharged or short circuited, or if they have become submerged in water (even if they have been dried out) or if their cases have become damaged. Don't do that.
- Remove XM42 from the charging source as soon as the indicator shows that charging is complete. The charger should protect against overcharging, but why not be extra safe?

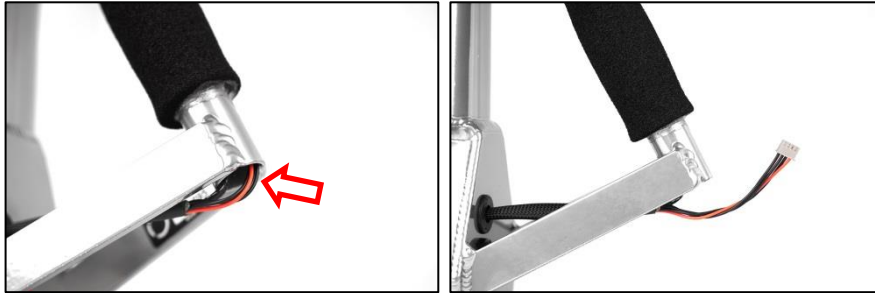
### DISCLAIMERS:

Transportation, shipping, and/or use of the XM42 may be regulated by federal, state, and/or local law. Verify applicable laws before using, transporting, or shipping. The Ion Productions Team, LLC and its members, managers, agents, and representatives shall not be liable for any special or consequential damages that result from the use of the products offered, even if The Ion Productions Team, LLC has been advised of the possibility of such damages. Applicable law may not allow the limitation or exclusion of liability or incidental or consequential damages.

Although the contents of this manual are believed to be accurate, The Ion Productions Team, LLC does not assume responsibility as to the accuracy, correctness, completeness, reliability and up-to-dateness of information made available through the manual. The contents of the manual are provided "as is" and without any expressed or implied warranties of any kind. The Ion Productions Team, LLC disclaims liability for any damages that arise as a result of the direct or indirect use of its manual and/or websites. The Ion Productions Team, LLC reserves the right to modify, amend, delete, suspend or discontinue its manuals and/or websites, which it controls, without prior notice.

**INSTRUCTIONS FOR USE****1. Charge battery before use.**

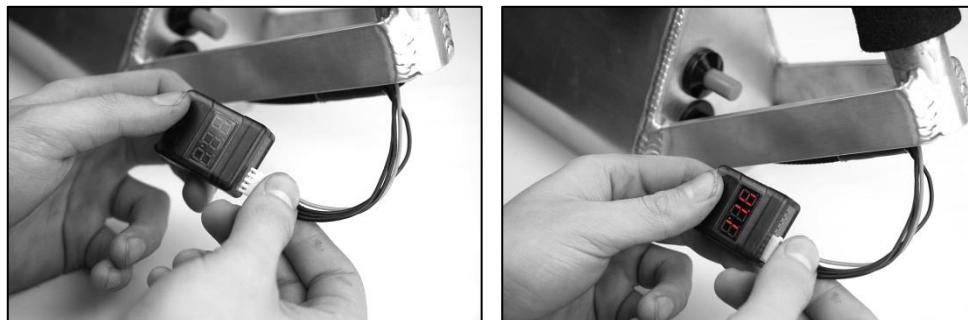
Charging cable is tucked into rear handle. Gently pull out to reveal connector. Ensure power button is off on XM42.



Plug the charger in to the wall outlet, and the XM42's connector into the 4-pin port on the charger (be sure to align the ridges of the connector with the cutouts on the charger). The LEDs will glow constant red during charging. When all LEDs turn green, the battery is fully charged. Disconnect cable, unplug the charger from the wall, and gently tuck the charging cable back into the handle.

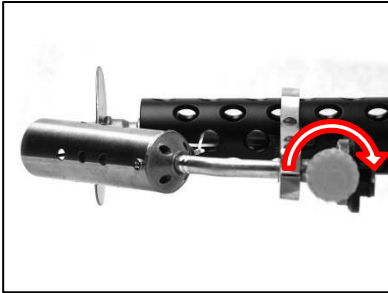
**2. Check voltage.**

Before each use, check the voltage of the battery using the supplied voltage tester. Insert the charge cable connector into the tester as shown. (plug the connector into the left-most 4 pins of the tester) It will beep and display the overall voltage as well as individual cell voltages. Overall voltage should be around 12.4-12.6 volts when fully charged. **DO NOT ALLOW TO DROP BELOW 10.0 VOLTS OR BATTERY FAILURE MAY OCCUR.**

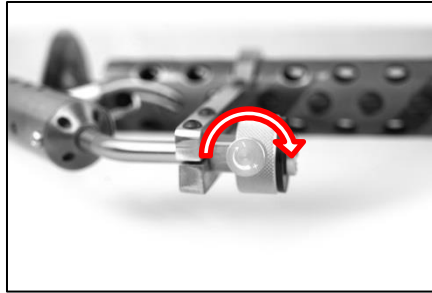


### 3. Install butane canister for pilot torch.

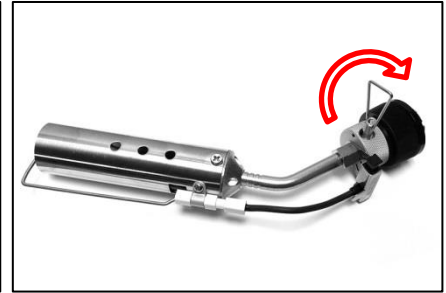
Ensure the pilot torch gas valve is closed (turn clockwise).



IF YOU HAVE A **YELLOW PLASTIC KNOB TORCH**

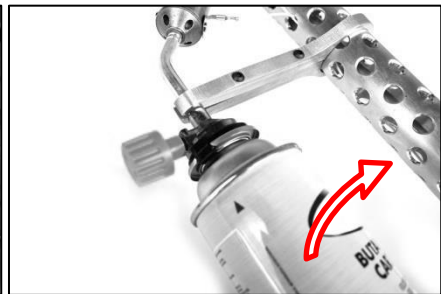


IF YOU HAVE AN **ALUMINUM KNOB TORCH**



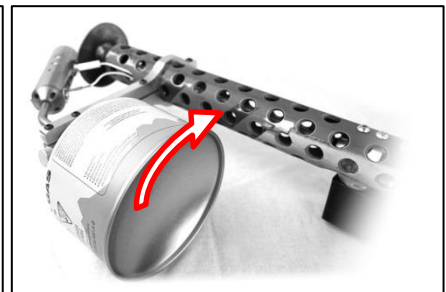
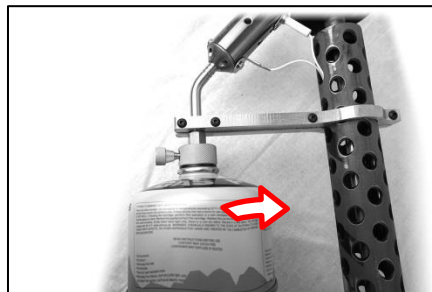
IF YOU HAVE A **WIRE KNOB TORCH**

If you have a **yellow plastic knob torch**, install a high quality 8-oz foodservice / kitchen torch style butane fuel canister by gently pressing the canister into the torch supply connection and rotating the canister clockwise until it stops.

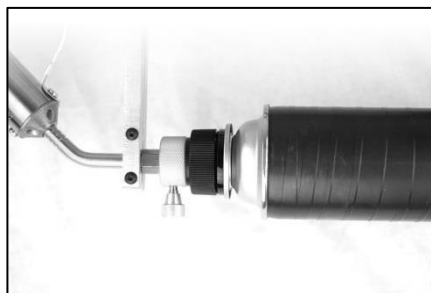


If you have an **aluminum knob torch** or **wire knob torch**, it is compatible with two styles of fuel canisters.

**OPTION 1:** Install a high quality camping stove style threaded butane fuel canister by screwing it onto the torch clockwise until fully seated and secure. Hand-tighten. **Do not over-tighten**; just enough to fully seat the canister. **When removing the butane canister, be sure to hold the knurled portion to prevent it from loosening or breaking off due to the tightness of the canister installation.**



**OPTION 2:** If you have the black adapter, you may snugly thread it onto the torch, and use an 8-oz kitchen style butane fuel canister in the same manner as the above yellow-knob torch instructions. **When removing the butane canister, be sure to hold the adapter to prevent it from loosening as well.**



## 4. Fill up the tank with fuel.

Remove the XM42 fuel tank cap by turning it counterclockwise and pour fuel into tank until full, taking care not to spill any onto the product exterior. **APPROVED FUELS:** Gasoline (unleaded), gasoline-diesel mixture, and ethanol. Use only approved fuels for longevity, safety, and warranty. The XM42 uses aluminum/stainless steel/brass and fluoroelastomer internals. Unapproved fuels have may not have been tested and could damage the hose inside.

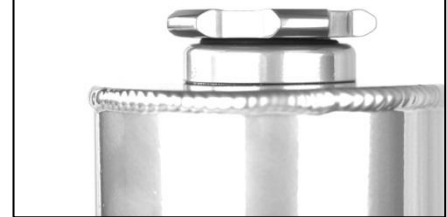


**DO NOT USE OR STORE WITH DIESEL FUEL INSIDE  
WHEN EXPOSED TO TEMPERATURES BELOW**

**32° F**

**DO NOT OVER TIGHTEN!**

O-RING SHOULD REMAIN VISIBLE WHEN CAP IS CLOSED. IF YOU CAN'T SEE IT, IT'S WAY TOO TIGHT!

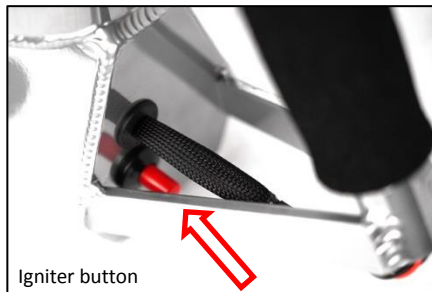


Reinstall fuel tank cap by turning it clockwise just until **finger tight**. It's not under pressure, we just want the o-ring to seal enough to prevent spills/leaks.

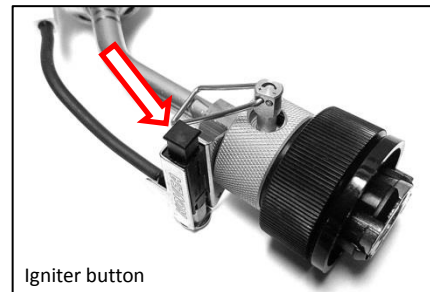
## 5. Shoot fire.

Move to a safe outdoor area free from objects that could be inadvertently ignited.

Open the pilot torch gas valve (counterclockwise) until you just hear a hiss due to gas flow, and push the igniter button to generate a spark inside the pilot torch to ignite the flame. If it does not ignite, you may need to close the gas flow valve more and try again. The aluminum knob torch is VERY SENSITIVE; it only takes a tiny amount of turning to release excessive amounts of fuel. The newer wire-knob torches with built-in ignition have much finer control.



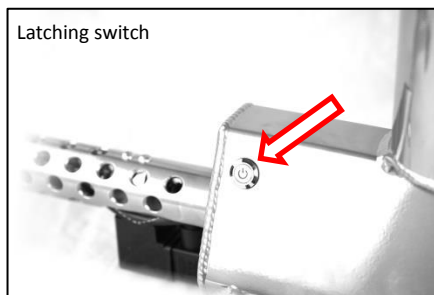
IF YOU HAVE A **YELLOW PLASTIC KNOB TORCH**  
OR **ALUMINUM KNOB TORCH**



IF YOU HAVE A **WIRE KNOB TORCH**

Once the pilot torch has a flame, adjust the valve to the desired size.

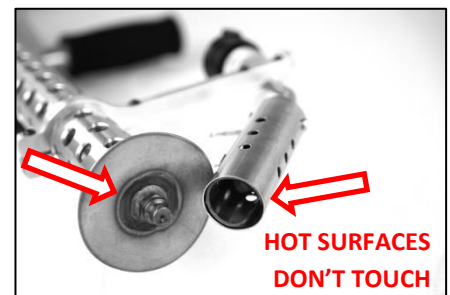
Push the latching power button on the side of the XM42 and it should illuminate to indicate the device is ready to operate.



Latching switch



Momentary button



**HOT SURFACES  
DON'T TOUCH**

Aim the product in a safe direction and press the black momentary button on the rear handle to emit fuel and subsequently a flaming stream up to and beyond 25 feet in distance. Do not run unit when fuel tank is empty or too low for steady operation. Refill fuel tank before continuing.

## 6. When you're finished lighting things on fire.

When you are finished using the XM42, turn off the pilot torch by turning the gas valve clockwise until fully closed. Blow out the remaining flame at the end of the XM42 or wait until the remaining fuel inside the plumbing burns off.

Be aware that small amounts of fuel can continue to spurt from the nozzle after the system is off. Fuel trapped between the pump and the nozzle orifice can spurt out depending on environmental conditions. It's a condition due to the vapor/heat trapped inside the pipe. Any trapped hot liquids and vapor are expanding and pushing liquid fuel out. Put a rag over the end after the XM42 cools or use the included vinyl cap to help prevent any little spurts during transport.

Turn off the illuminated power button by pressing it again. Ensure the switch is off when not in use to prevent any inadvertent fuel emission. Remove the butane canister between uses to prevent any accidental opening of the gas valve during transport/handling.

### TO PREVENT MOISTURE FROM ACCUMULATING AND DAMAGING THE FUEL PUMP

WE RECOMMEND THAT YOU DO ONE OF THE FOLLOWING:

- KEEP YOUR XM42 FILLED WITH 1/4 TANK OF GASOLINE FUEL BETWEEN USES.
- USE GASOLINE-DIESEL MIXTURE (ROUGHLY 30% DIESEL) AND RUN UNTIL EMPTY BEFORE STORING (IN LOCATIONS ABOVE 32 DEGREES F)
- USE GASOLINE ALONG WITH A SMALL AMOUNT OF MOTOR OIL (ABOUT 50:1 RATIO OF FUEL:OIL) AND RUN UNTIL EMPTY BEFORE STORING.

## MAINTENANCE/REPAIR

The XM42 is designed to generally be maintenance free. All components are constructed for industrial use. The intermittent operation seen by the XM42 should not degrade any component in any measurable amount. Nevertheless, failures can occur in any mechanical device. The internals utilize hard plumbing with high quality thread sealant, along with a short fluoroelastomer hose. Inspect for leakage before every use.

### General maintenance:

- Keep fuel tank cap o-ring lubricated with a very small amount of oil (multi-purpose oil, SAE 30 motor oil, etc.) to ensure smooth seating of the fuel cap.
- If the fuel tank cap ever seems gritty in its installation/removal, apply a small amount of oil to the threads and work the cap back and forth some to help.
- Although lithium polymer batteries are designed to be safe as long as there is no physical damage or over/under charging done to them, we like to err on the safe side and recommend battery replacement every 3 years with a quality 2200mAh 3S 12.6 volt XT60 connector lithium-polymer battery. We offer free battery replacement for only the cost of shipping. For safety/liability reasons, we do not encourage the user to perform their own service by drilling the rivets out using a very short 1/8" drill bit to avoid any wiring and use four aluminum blind rivets, 1/8" diameter, designed for .126"-.187" material thickness to reassemble.
- For repairs, battery replacement, or other services, contact us at [support@xm42.com](mailto:support@xm42.com) and we'll do what we can to help!

## ABOUT

Founded in 2004, and officially registered in 2015, The Ion Productions Team is a small company located in Phoenix, Arizona that focuses on bringing exciting and unique products to the world. We are dedicated to providing the highest quality products for our customers. Between high grade materials, technical expertise, and pride in craftsmanship, we are confident in producing the most efficient, reliable, and safe products possible.

Thank you for your purchase, we hope you enjoy owning your own flamethrower!

If you experience any issues with your XM42, contact us at [support@xm42.com](mailto:support@xm42.com) and we will immediately do what we can to help!

The Ion Productions Team, LLC  
720 N Golden Key St Ste C-1  
Gilbert, AZ 85233